



GLOBAL ENGINEERING

An ISO 9001 - 2015 Certified Company



Mfg. & Stockist Of :

Tube Fittings . Pipe Fittings . Valve .
Instrument Fittings . Thermowell

About Us

GLOBAL ENGINEERING is committed to excel quality products in the field of fluid transfer system accessorise, fittings BL valves by achieving its goal of total customersatisfaction by :

- Understanding and anticipating the needs of customers.
- Expanding our knowledge base and improving work force through training, research, development and innovation.
- Establishing and maintaining total quality management system as per various internationally accepted standards and thereby producing and marketing high quality products at competitive rates in order to meet and exceed the expectation of customers.

**Mission
&
Vision**

GLOBAL ENGINEERING was incepted in 2000 in Mumbai (India), with a vision to cater the needs of companies within Gas (PNG & CNG) and Automotive Industries. Today we are recognized as one of the foremost manufactures and supplier of superior quality **Flexible Hose Pipe Assemblies, Camlock Couplings, Compression Fittings, Brass 8L SS Valves, Brass 81 SS Pipe Fitting Autom-otive Fitting (CNC 8L BMC)** in Indian domain market with the latest in-house machinery and infrastructure under one roof, we manufacture a wide range of products in different sizes and metals like brass, stainless steel, mild steel, copper etc. according to customer's need. We are committed to manufacture our products in a safe working environment with the help of skilled manpower. We understand 81 incorporate the feedbacks / recommendations to meet customer's quality product standard requirement time to time **Mr. Sehjad Sojar**, the CEO whose vast experience, capability 81 guidance has made us prominent in the field.

**Company
Profile**

Products Details & Specifications

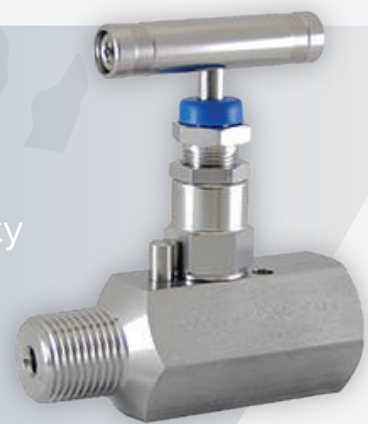
BALL VALVE :

Ball Valves are Two way, Three way, Four way, Five way. Floating ball design to ensure leak—proof shut off. Testing : 100% tested at 6000 PSL
Material Construction : SS. 304, SS. 316, Carbon Steel (CS), Brass and monel.



NEEDLE VALVE :

Needle Valves are forged or bar stock body construction straight or angle pattern with panel mounting option Union bonnet, Screwed bonnet Integral bonnet. our variety of end connection includes single or twin tube fittings, male or female threaded NPT, BSP, BSPT.
Material Construction : SS. 304, SS. 316, Carbon Steel (CS), Brass and Monel. Testing 100% test at 6000 PSI.



CHECK VALVE :

Check valve are design for UNI-DIRECTION flow control of fluids and gases.
Check valve size 1/8" to 2" with end connection (male and female) NPT, BSPT and ODT.
Material Construction : SS. 304, SS 316 Carbon Steel (CS) and Brass.
Testing : 100 % tested for crack and reseal performance.



QUICK RELEASE COUPLING (QRC) :

QRC end connection 1/8" to 2" NPI, BPT, BSPT, male and female.
Material Construction 1 SS. 304, SS. 316, Carbon



Products Details & Specifications

GAUGE VALVE :

Gauge Valve Include Gauge Union Bonnet Needle Valve with bleed plug and without bleed plug. Gauge union bonnet valve with one side drain and with bleed plug and hex head bleed valve.

material Construction : SS. 304, SS. 306, Carbon Steel (CS) and Monel.

Size : 1/2" and 3/4" with NPT, BSPT, male and female.

Testing 100% tested at 6000 PSI.



MANIFOLD VALVE :

Manifold Valves are two way / three way / five way valves.

These Manifold valves are remote mounting pipe to pipe :

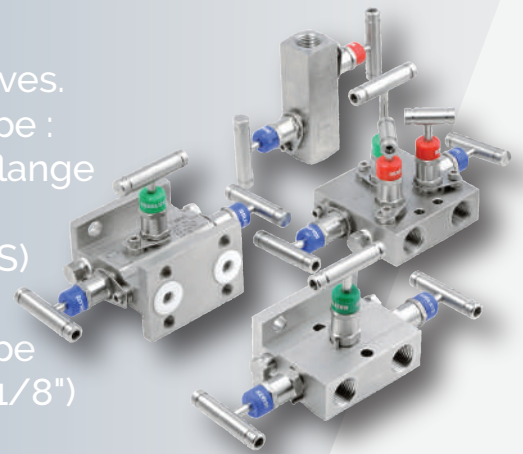
"R" type, Direct mounting pipe to flange : "T" type and flange

to flange : "H" type. Pressure Rating : Up to 6000 PSI.

Material Construction: SS. 304, SS. 316, Carbon Steel (CS) and wide range of optional materials.

Manifold valves consist of 1/2" NPT (F), Pipe to Pipe, Pipe to Flange or Flange to flange connection on 54mm (2", 1/8") centers and 1/4" NPT (F) for drain.

Testing : Each valve on every manifold is 100% tested with nitrogen at 2000 PSI for leakage at the packing, seat and shell and 9000 PSI with Hydrostatic.



THERMOWELLS :

Thermo wells available in flanged. Thread socket weld type, sanitary weld-in-type. material Construction : S.S. 304, S.S. 316

Pressure Rating : Up to 3000 PSI.

Size: 1/2, 3/4", 1 NPT.



Products Details & Specifications

TUBE FITTING :

Designed for process & Instrumentation Tubing's. Instrumentation Tube Fittings provide a zero leak proof seal which withstands high pressure, vacuum, temperature & vibration. Tee, Elbow & Cross Fittings are manufactured from stainless Steel SS. 316, 304, Carbon Steel and Brass. Compression Nut threads are silver plated to extend the life of product.



PIPE FITTINGS :

Class: 2000, 3000, 6000 and 9000,
Size : 1/4" to 2" NPT, BSP, BSPT and SOCKET WELD.
Material Construction : SS. 304, SS. 316, Carbon Steel (CS), Brass and Alloy Steel F11, F22.



AIR HEADER :

Needle valves are forged or bar stock body construction straight or angle pattern with panel mounting option Union bonnet, Screwed bonnet, Integral bonnet. our variety of end connection includes single or twin tube fittings , male or female 44 threaded NPT, BSP and BSPT.

Material Construction 2 SS. 304 SS. 316 Carbon Steel (CS), Brass and Monel.

Testing : 100% tested at 6000 PSI.



GAUGE COCK SYPHONE TUBE :

Bar Stock Gauge Cock Syphone Tube to pipe with standard connection.

Size available for bar stock 1/2" inlet x 3/8" outlet for pipe type 1/2" inlet x 3/8" outlet for pipe type 1/2".

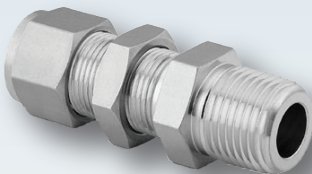
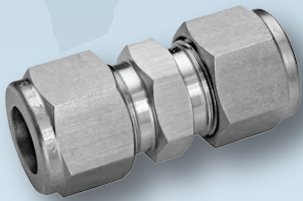


Products Details & Specifications

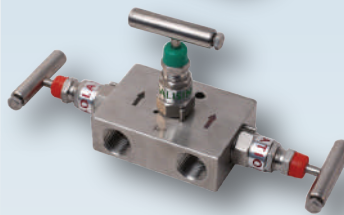
Global Instrumentation SS Tube Fittings are designed as leak free connections for process, power, and instrumentation applications. The single/double ferrule fittings are also available in a broad range of sizes, materials, and configurations.

Compression Fittings

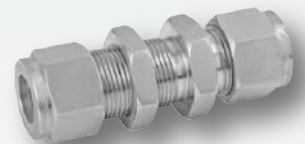
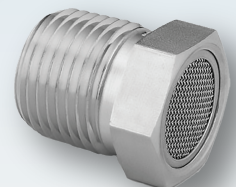
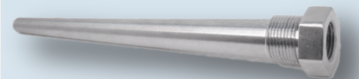
Tube Fittings



Instrument Valves



Intrument Accessories



Products Details & Specifications

Compression Fittings

Global Instrumentation SS Tube Fittings are designed as leak free connections for process, power, and instrumentation applications. The single/double ferrule fittings are also available in a broad range of sizes, materials, and configurations.

CARBON STEEL FITTING



Compression Fittings

Global Instrumentation Brass Tube Fittings are designed as leak free connections for process, power, and instrumentation applications. The single/double ferrule fittings are also available in a broad range of sizes, materials, and configurations.

BRASS TUBE FITTINGS





GLOBAL ENGINEERING

“ Our Products are designed engineered and manufactured to client's exact specification. “



Sehjad Sojar (Proprietor)

✉ global.engineering1233@gmail.com

☎ 9819601752 / 8850525708

Regd. Off :

📍 Gala No.18, Sonal Industrial Estate Near Honda Showroom Bhayandar East - 400 105

☎ 9819601752 / 8850525708

✉ global.engineering1233@gmail.com